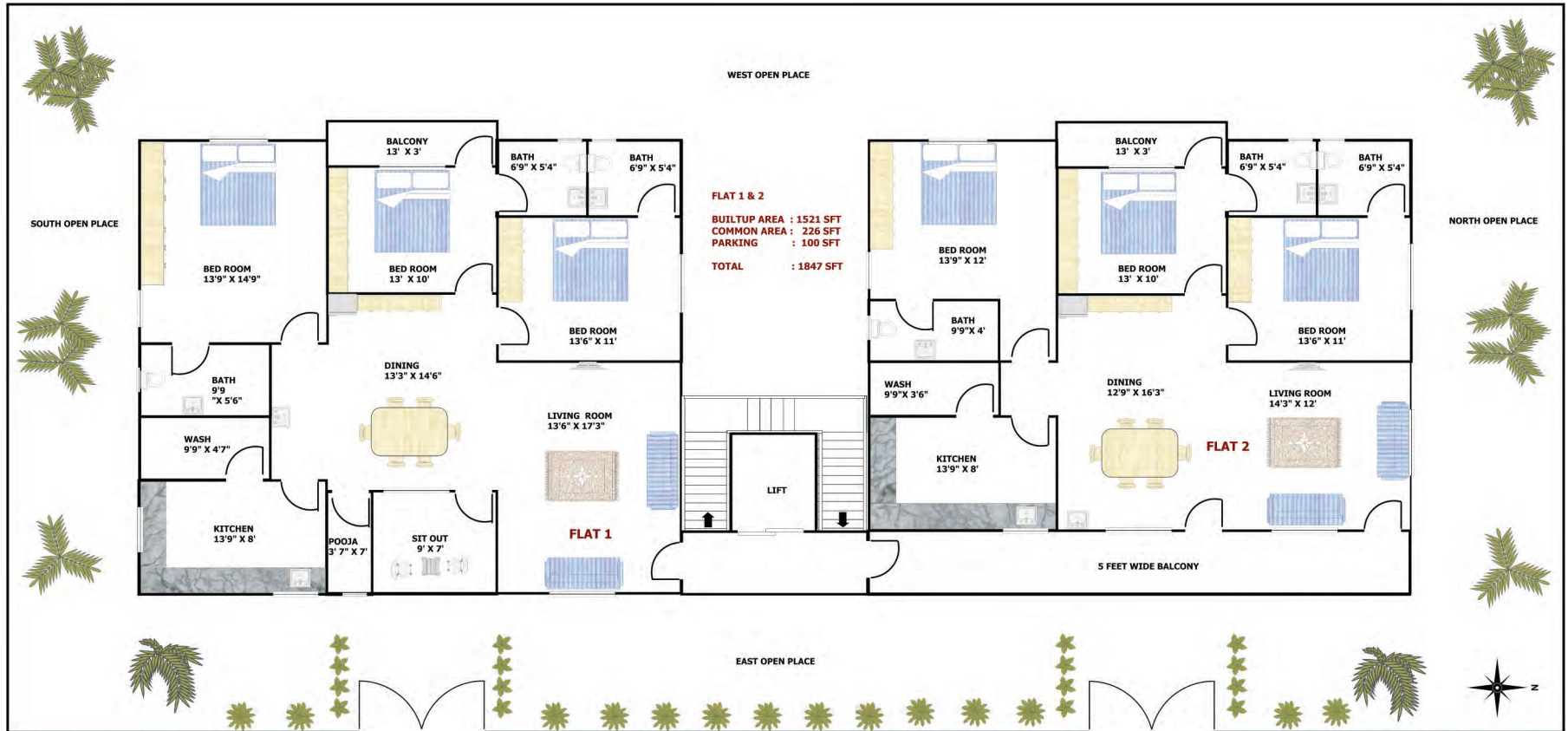


Whisper Meadows 2

a sequel to the most stylish and elegant residential flats of Poranki



Live the Whisper Meadows Life



whisper meadows 2 Typical Floor Plan

- well ventilated 3 bed room flats
- spacious and vastu compliant
- wardrobes and modular kitchen
- designated car parking slots

Disclaimer: This is not a legal offering. The developers reserve the right to alter / make changes as deemed fit

Car Parking Plan



Location map



- Located adjacent to 4500 s.ft park developed by VRR
- Just a walk away from Machilipatnam port road
- Very close to schools, colleges and hospitals
- 0.5km from proposed Bus Rapid Transit System (BRTS)

Specifications

- Foundation : Under reamed pile foundation RCC Framed structure
- Super structure : All external walls 9" and Internal walls 4 ½" size with clay bricks
- Plastering : Plastering in cement mortar POP corncing For all rooms
- Main door : Teak frame and Teak door
- Internal doors : Teakwood frame and flush doors
- Painting : External - Emulsion
Internal - Smooth finish with altec and emulsion paint
- Flooring : 2'x2' size vitrified tiles in all rooms and 1'x1' size ceramic tiles in bathrooms
- kitchen : Suitable granite platform on RCC slab with Sink and tile dado upto 2' height above the platform and provision for chimney & cooking gas pipe Fitting
- Toilets : Diverter, spout, shower of Hindware make in Master bedroom and wall mixer, shower of Hindware make in two bathrooms One white color EWC and washbasin in each Bathroom, ceramic tiles dado up to 6' height
- Electrification : Concealed electrical wiring with standard electrical Points Legrand switches and standard fittings, Electrical fixtures: 5 fans, 5 tubes, 7 CFL bulbs
- Wardrobes : Reinforced cement slabs with laminated MDF / Ply board frames and shutters in each of the three bed rooms, kitchen , one crockery cabinet and one TV Cabinet, and Modular Kitchen
- Common amenities : One 6 passengers lift, Intercom Facility, Generator backup for lighting, Solar water heater Common gas pipeline, Car parking slots: 2 per flat



VIJAYA RAJA RAJESWARI CONSTRUCTIONS PVT LTD
D.NO: 42, JD Nagar, Patamata, Vijayawada-520006
Phone: 0866-6459999, 9440442677
www.vrrc.in Email:info@vrrc.in

CALL 9246162788

CALL 0866 2588234

CALL 9989488088

CALL 9440157711